

# PowerMic Mobile Supplement

## Prerequisites

1. Organization-unique configuration URL. If you have not received this, please reach out to your administrator.
2. Access to iTunes Store (iPhone) or Google Play Store (Android). If your organization uses mobile device management (MDM), please check with your administrator.

## Installing and Configuring

### Step 1:

If you have Dragon Medical One open, please exit the application before following the next steps. If you miss this step, you may experience issues pairing PowerMic Mobile and Dragon Medical One.

### Step 2: Installing

- Download the PowerMic Mobile app. To use the links below, open this document on your mobile device. If your organization uses mobile device management (MDM), please check with your administrator.



**iPhone users** (requires iOS 15 or greater): [Download the iOS app.](#)

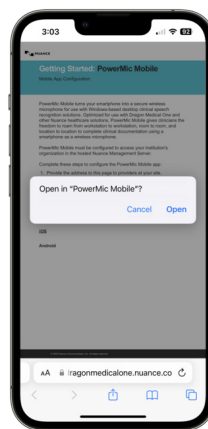
**Android users** (requires Android 9 or greater): [Download the Android app.](#)

- **Do not open** the app at this point. Continue to step 3.

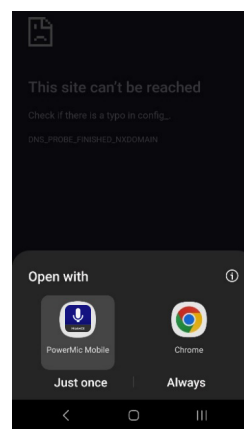
### Step 3: Configuring

To configure PowerMic Mobile to your organization, open the configuration link provided to you by your organization from your mobile device.

- From the webpage that opens, select the device-specific link that correlates with your mobile device (iOS or Android) under the “PowerMic Mobile Configuration Links” section. When prompted for an application to open the link, select “Open” for iOS devices or the PowerMic Mobile icon, then “Always” for Android devices.

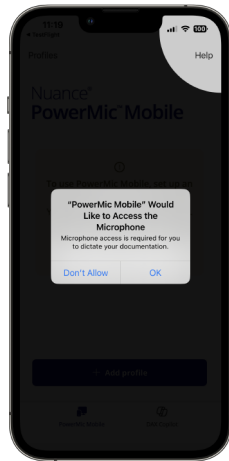


iOS

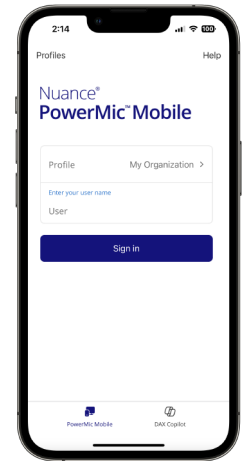


Android

- Accept “Allow microphone access” on the mobile device if prompted.

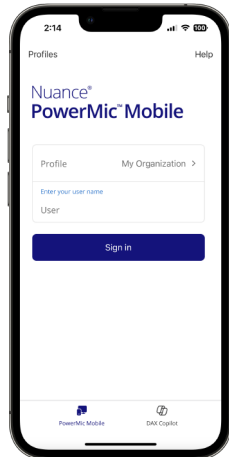


- PowerMic Mobile is now configured.



#### Step 4: Logging In

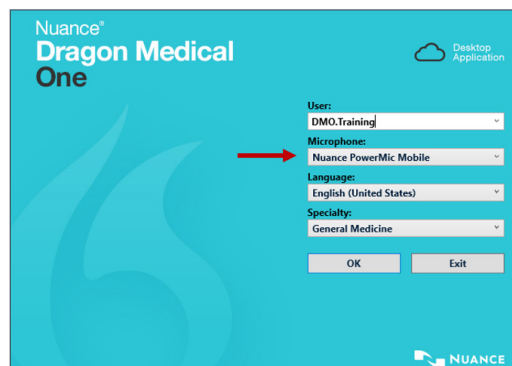
- Enter your Dragon Medical One username in the “Enter user name” field and select “Sign in.”



- After you select Sign in, you should see “Searching for computers...” at the top of the screen.



- Launch Dragon Medical One from your workstation and enter your username (and password, if applicable).
- Click the “Microphone” drop-down and choose “Nuance PowerMic Mobile”.
- Click OK to login.



## DragonBar Microphone Status

When you first login to Dragon Medical One, you will see this DragonBar\* status while it pairs with your PowerMic Mobile app:



Once PowerMic Mobile has successfully paired with Dragon Medical One, you will see:

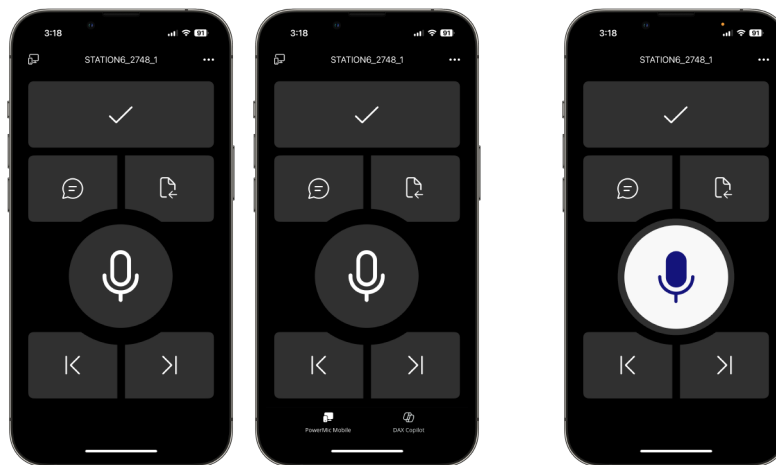


To start dictating, select the red microphone button on PowerMic Mobile to turn the microphone on. You will now see:



\* Your DragonBar may look different depending on your version of Dragon Medical One.

## PowerMic Mobile Microphone Status once paired with Dragon Medical One



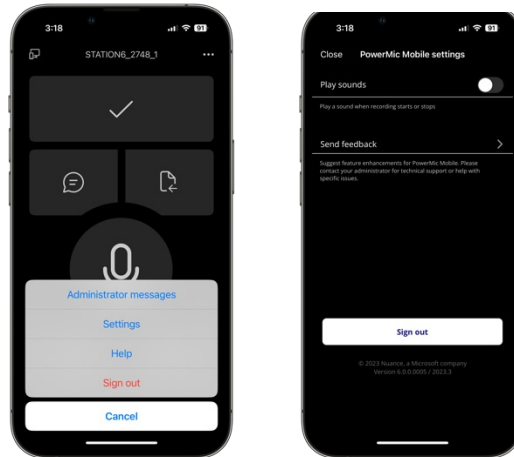
*Microphone Off*

*Microphone On*

- Select the microphone icon to turn the microphone on.
- Select the microphone icon to turn the microphone off.
- To log off PowerMic Mobile, select the ellipsis ... at the top and select "Sign out."

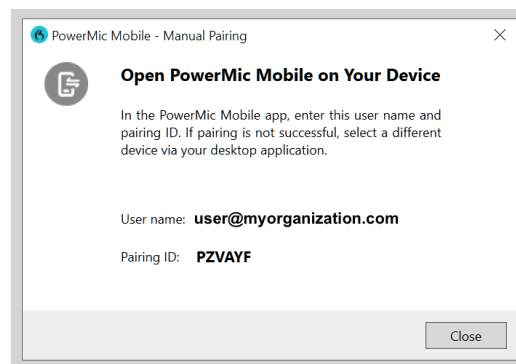
## PowerMic Mobile Audio Settings

To play a notification sound when you start or stop recording, select the ellipsis ⋮, select Settings, and toggle the Play sounds button to turn on.



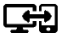
## Manually Pairing

- If you need to manually pair PowerMic Mobile and Dragon Medical One, login to PowerMic Mobile and Dragon Medical One, then click the orange microphone icon on the DragonBar\*.



\* Your DragonBar may look different depending on your version of Dragon Medical One.

- From the PowerMic Mobile app:

Tap  to open the **Target Applications** screen and tap **Manually pair with a target application**. The input screen for the pairing ID is displayed.

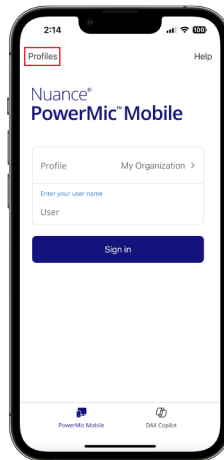
- Select “manually pair with a target application” and enter the Pairing ID.

## Setting Up PowerMic Mobile for two separate healthcare organizations

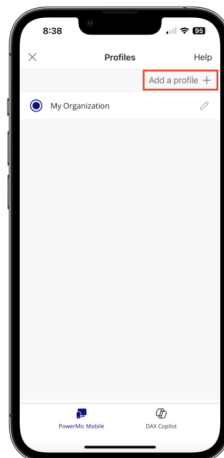
This is intended for providers who are on staff across multiple healthcare organizations and have received separate licenses to use PowerMic Mobile for each organization. This requires the provider to create a separate PowerMic Mobile profile for each organization.

**Note:** In this scenario, we will assume that the provider has already created a PowerMic Mobile profile at one of two organizations, and simply needs to add a second PowerMic Mobile profile for an additional organization which uses Dragon Medical One and has issued licenses for PowerMic Mobile to the provider.

- Open the PowerMic Mobile app on your smartphone to the login screen and select “Profiles” at the top right.



- Select “Add a profile +”



- Copy the configuration URL provided from the second organization and paste it into the space under the “Profile URL” heading. Then type in your organization name under the “Profile name” heading and select the Save button below.
- **Helpful Hint:** Add a profile name for each organization to distinguish one from another.

## Troubleshooting

- If you are having difficulty configuring PowerMic Mobile, try sending yourself a text message with the configuration link. Be sure to select PowerMic Mobile when prompted for an application to open the link.
- If the configuration link fails with your mobile device connected to Wi-Fi, turn Wi-Fi off on the mobile device and try again using cellular data. Some wireless networks may have firewalls blocking the connection.
- If the mobile device does not pair automatically, this usually indicates a problem with credentials. Let your Dragon management console administrator know you are having an issue and they may be able to resolve it.
- If the mobile device is not connected to Wi-Fi and there is low cellular signal you may have difficulty using PowerMic Mobile.
- **Android only:** You may need to clear your default applications if you are having difficulty getting PowerMic Mobile to open the configuration link on your mobile device (example below for Samsung Galaxy S7).
  - Launch the Settings app from your Home screen or from the app drawer.
  - Select Device.
  - Select Applications.
  - Select Default applications.
  - Select Set as default.
  - Select the app for which you'd like to clear defaults.
  - Select Clear Defaults.
- **Android only:** When entering the PowerMic Mobile configuration, user receives an error message "A profile with this URL configuration already exists."
  - If PowerMic Mobile had previously been downloaded and configured, and then deleted, you will need to clear the cache in the settings before trying to configure again.
  - Go to Android Settings > Apps > PowerMic Mobile > Storage > Clear data & Clear cache.

### NEED MORE LEARNING MATERIALS?

In the Dragon Medical One application, dictate "open training" and navigate to the Learning Library to access all quick reference materials, training videos, past webinars and more. To sign up for our Dragon Medical One newsletter or future training opportunities, please scan the QR code to the right or visit [nuance.com/DMO-hub](https://nuance.com/DMO-hub).



Administrators without access to Dragon Medical One can go to [nuance.com/DMOAdmin](https://nuance.com/DMOAdmin) to gain access to these materials.



### About Nuance Communications, Inc.

[Nuance Communications](https://www.nuance.com) is a technology pioneer with market leadership in conversational AI and ambient intelligence. A full-service partner trusted by 77 percent of U.S. hospitals and more than 75 percent of the Fortune 100 companies worldwide, Nuance creates intuitive solutions that amplify people's ability to help others. Nuance is a Microsoft company.